

NovoTop A

Flats series

Debut at Barcelona

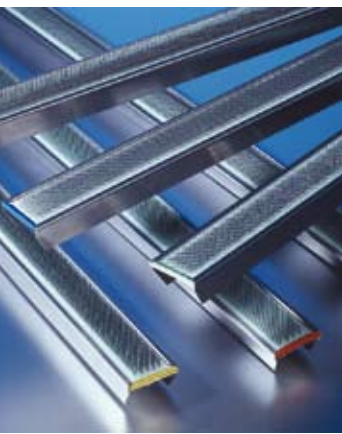
ITMA 2011

September 22-29, 2011

TRÜTZSCHLER
CARD CLOTHING

NovoTop A – The revolution in the field of revolving flats

- Newly developed foundation “made by TCC”
- Innovative setting pattern for optimal cleaning and carding
- Surface coated steel prevents oxidation



If optimal quality is of importance in the cotton mill, Trützschler Card Clothing (TCC) provides a groundbreaking innovation: The new flats series NovoTop A.

The NovoTop A series stems from newly developed flats hooks with increased transverse rigidity.

In addition, the foundation is now also produced by TCC. This has been made possible by the acquisition of a reputable foundation manufacturer. As a result, the vertical integration of TCC has increased, giving you the assurance that the flats – which are crucial for the carding process – are available from one source.

Make the most of our technological revolution and experience a new quality standard in the cotton mill.



Flats clothings of the NovoTop A series are of course also available in MAGNOTOP version.

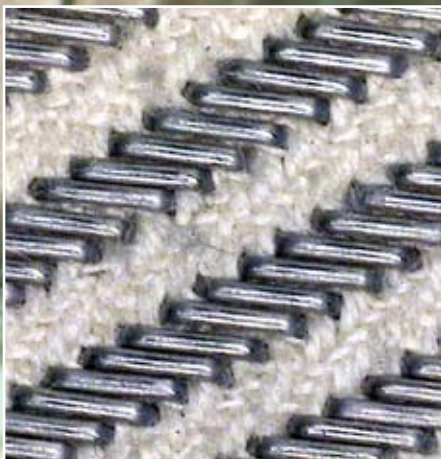
In combination with the innovative setting pattern, NovoTop A presents a premium product that meets highest quality requirements and lowers IPI values by up to 20% in standard applications.

| Type of flat | Application | Production | Yarn count |
|--------------|-------------|------------|----------------|
| NovoTop A80 | Ring | < 30 kg/h | > 80 |
| NovoTop A70 | Ring | < 55 kg/h | Ne 40 to Ne 80 |
| NovoTop A60 | Ring/Rotor | < 100 kg/h | Ne 20 to Ne 40 |
| NovoTop A50 | Ring/Rotor | > 100 kg/h | < Ne 20 |

NovoTop A – Innovations at a glance



Perfect foundation structure



Exact setting pattern of flats hooks



Hooks made of surface coated steel

TRÜTZSCHLER

S P I N N I N G



- Fibre Preparation
- Bale Opening
- Blending
- Cleaning/Opening
- Foreign Matter Separation
- Dedusting
- Tuft Blending
- Waste Recycling
- Carding
- Drawing

N O N W O V E N S



- MAN-MADE FIBERS
- Staple Fiber
- Precursor Lines
- Carbon Fiber Lines
- NONWOVENS
- Opening/Blending
- Card feeding
- Cards/Crosslapping
- Web needling
- Hydro Entanglement
- Finishing
- Drying
- Heatsetting
- Chemical Bonding
- Thermobonding

C A R D C L O T H I N G



- Metallic Wires
- Spinning
- Nonwovens/
Longstaple
- Open End
- Flat Tops
- Fillets
- Carding Segments
- Service Machines
- Service 7/24

Disclaimer: This brochure has been created by us to the best of our knowledge and with great care. We are however not liable for any spelling mistakes or technical changes. Photographs and illustrations are of informative value only and some show special optional equipment that is not included in standard delivery. We provide no guarantee for the current relevance, correctness, completeness or quality of the information provided. All liability claims against us or the respective author pertaining to material or immaterial damages caused by the use or circulation of the provided information, even if found to be incorrect or incomplete, are excluded. Our information is non-binding. Print No.: 11007-07/11-e - Agentur Brinkmann GmbH, Krefeld